

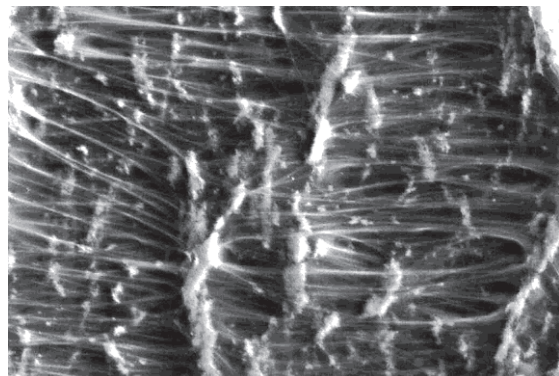
## Filter media

### Ti 2011

Polyester fleece with stainless steel fibres and PTFE membrane, electrostatical conductive

#### 1. Features

The filter media Ti 2011 is specially engineered for filtration of very fine, electrostatically charged and flammable dust. This pioneering filter media combines a polyester fleece with stainless steel fibres and with a laminated PTFE membrane and silver fibres. Compared to other electrostatical conductive filter media its surface is white. Electrostatically charged particles transfer their charge via the membrane to the conductive polyester media. Ti 2011 is a composite media that makes the advantages of surface filtration combined with a white media accessible to ATEX applications in the food and pharmaceutical industry.



#### Characteristics

- Specially designed for filtering electrostatically chargeable and explosive fine dusts
- Efficient surface filtration thanks to the microporous PTFE membrane
- High mechanical strength
- High load capacity
- Very smooth, fibre-free surface
- Excellent cleaning properties
- Compliance with the requirements of DIN EN 60335-2-69/Dust class "M" and EN 1822-3 class "E10" at  $v \leq 1\text{m/min}$
- Filter media is conform to regulations (EC) No. 1935/2004 and (EU) No. 10/2011 as well as FDA 21 CFR CH. I §177.1550 requirements
- Electro statical behaviour tested according to DIN EN 54345 Part 5
- Worldwide distribution

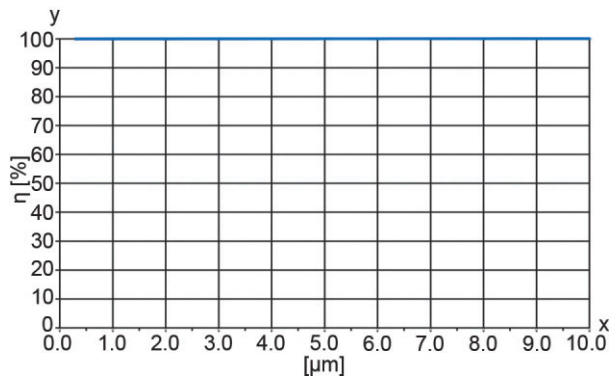
## 2. Technical data

Type	Media	Media thickness [mm]	Weight [g/m <sup>2</sup> ]	Air permeability [m <sup>3</sup> /m <sup>2</sup> h]	max. operating temperature [°C]	Test certificates/ dust classes
Ti 2011	Polyester fleece with stainless steel fibres and PTFE membrane	0.6	350	55 at Δp 200 Pa	130	DIN EN 60335-2-69 "M" EN 1822-3 "E10"

Technical data is subject to change without notice!

Electrostatic resistance according to DIN EN 54345 Part 1 and 5: < 1 x 10<sup>6</sup> Ω

## 3. Filtration efficiency



Filtration efficiency: > 99.99 %  
at 0.3 μm

Test conditions  
Filter surface load: 3.36 m<sup>3</sup>/m<sup>2</sup>\*min  
Mass concentration: 200 mg/m<sup>3</sup>  
Test dust: Dolomit DRB 20 (Rock flour)

x = Particle size [μm]  
y = Filtration efficiency η [%]

These values may vary depending on the nature of the dust, the composition of the gas and the cartridge design.

## 4. Chemical resistance/mechanical properties

Chemical resistance	Chemical resistance				Mechanical properties		
	Very good	Good	Limited		Very good	Good	Limited
Humidity		x		Surface quality (smoothness)	x		
Hydrolysis			x	Stability	x		
Acids		x		Abrasion resistance			x
Alkalis			x	Cleanability (jet pulse)	x		
Solvents		x		Washability		x	

These properties are of purely qualitative valuation and depending on the nature of the dust, the composition of the gas and the operating conditions (e.g. temperature).

## 5. Design

Please contact us for detailed technical information, any open questions and for general expert advice. Completion of the relevant questionnaire would facilitate in the coordination of all important parameters. Comprehensive documentation on our product range, cleaning units and cartridges can be provided.

Filtration Group GmbH  
Schleifbachweg 45  
D-74613 Öhringen  
Phone +49 7941 6466-0  
Fax +49 7941 6466-429  
industrial.sales@filtrationgroup.com  
industrial.filtrationgroup.com  
72402364.12/2025  
Filter media Ti 2011